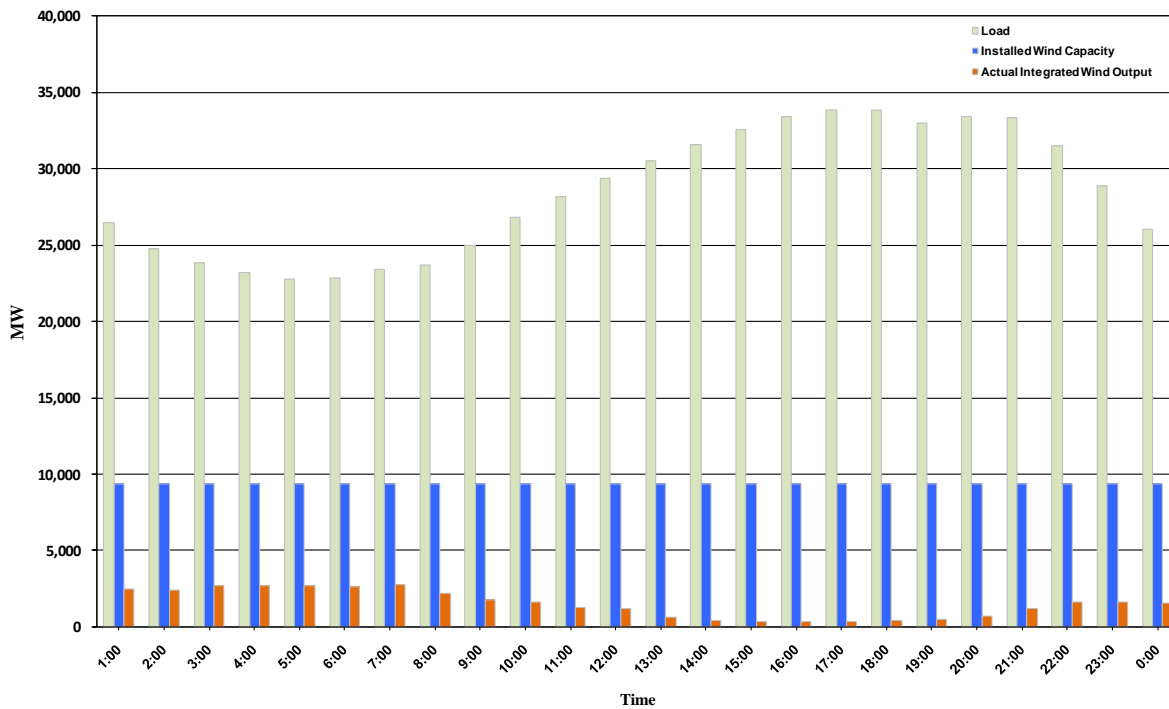




## ERCOT Grid Operations Wind Integration Report: 10/03/10

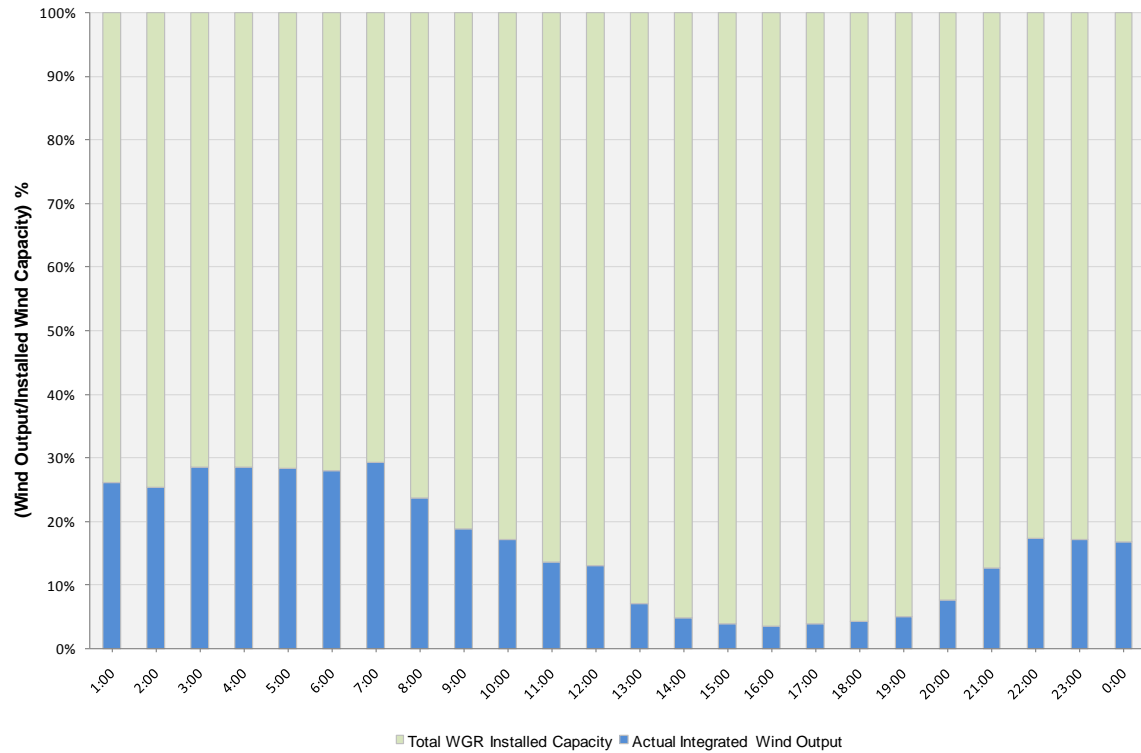
Peak Load	<b>33,807 MW</b>
Load Peak Hour	<b>17</b>
Wind Record 06/12/10	<b>7016 MW</b>
Max Wind value	<b>2905 MW</b>
Wind Peak Hour	<b>06:32:00</b>
Wind Penetration %	<b>12.39</b>

Hourly Average Actual Load vs. Actual Wind Output  
10-03-2010

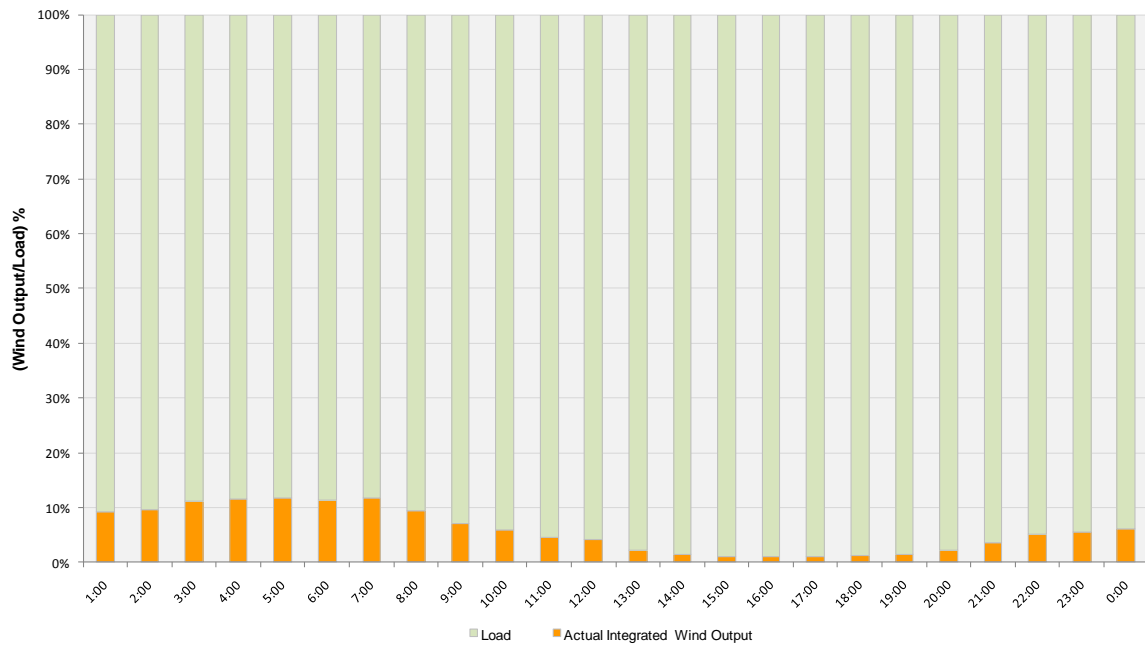




**Actual Wind Output as a Percentage of the Total Installed Wind Capacity**  
**10-03-2010**



**Actual Wind Output as a Percentage of the ERCOT Load**  
**10-03-2010**





**ERCOT Load vs. Actual Wind Output 09/26/10 - 10/03/10**

